



CROSSFIRE

# Coaxial Passives

**BTI\_3rd Party RF Splitters supplied v1.1**

1. 2 Way Splitter.....	3
<b>1.1 SP2-H0738-N.....</b>	<b>3</b>
<b>1.2 SP2-H0738-4310.....</b>	<b>4</b>
<b>1.3 SP2-H0738-D.....</b>	<b>5</b>
<b>1.4 SP2-H0327-N.....</b>	<b>6</b>
<b>1.5 SP2-H0560-N.....</b>	<b>7</b>
<b>1.6 SP2-H0560-4310.....</b>	<b>8</b>
2 3 Way Splitter.....	10
<b>2.1 SP3-H0738-N.....</b>	<b>10</b>
<b>2.2 SP3-H0738-4310.....</b>	<b>11</b>
<b>2.3 SP3-H0738-D.....</b>	<b>12</b>
<b>2.4 SP3-H0327-N.....</b>	<b>13</b>
<b>2.5 SP3-H0560-N.....</b>	<b>14</b>
<b>2.6 SP3-H0560-4310.....</b>	<b>15</b>
3 4 Way Splitter.....	16
<b>3.1 SP4-H0738-N.....</b>	<b>16</b>
<b>3.2 SP4-H0738-4310.....</b>	<b>17</b>
<b>3.3 SP4-H0738-D.....</b>	<b>18</b>
<b>3.4 SP4-H0327-N.....</b>	<b>19</b>
<b>3.5 SP4-H0560-N.....</b>	<b>20</b>
<b>3.6 SP4-H0560-4310.....</b>	<b>21</b>

## 1. 2 Way Splitter

### 1.1 SP2-H0738-N

#### Technical Specifications

Insertion Loss	≤ 0.5dB
Split Loss	≤ 3.0dB
VSWR	≤1.3
Impedance	50 Ω
Power Handling	300W
PIM3	≤-155dBc@2*20W
Connector	N Female
Operating Temperature	-30~+65 °C
Relative Humidity	5~95 %
Application	Indoor or Outdoor (IP65)
Dimensions	219x61x25 mm
Weight	300g

#### Drawing



## 1.2 SP2-H0738-4310

### Technical Specifications

Frequency Range	698~3800 MHz
Insertion Loss	≤ 0.5dB
Split Loss	≤ 3.0dB
VSWR	≤1.3
Impedance	50 Ω
Power Handling	300W
PIM3	≤-160dBc@2*20W
Connector	4.3-10 Female
Operating Temperature	-25~+75 °C
Relative Humidity	5~95 %
Application	Indoor or Outdoor (IP65)
Dimensions	154x66x25 mm
Weight	300g

### Drawing



## 1.3 SP2-H0738-D

### Technical Specifications

Frequency Range	698~3800 MHz
Insertion Loss	≤ 0.5dB
Split Loss	≤ 3.0dB
VSWR	≤1.3
Impedance	50 Ω
Power Handling	300W
PIM3	≤-160dBc@2*20W
Connector	DIN Female
Operating Temperature	-25~+75 °C
Relative Humidity	5~95 %
Application	Indoor or Outdoor (IP65)

Dimensions	158x74x25 mm
Weight	320g

## Drawing



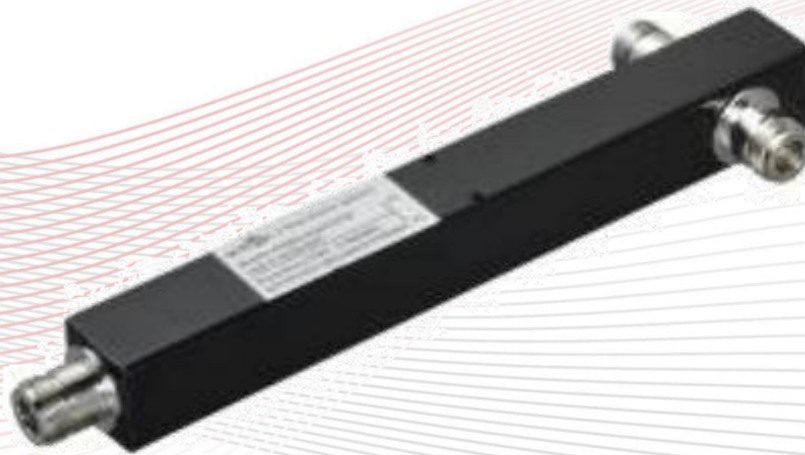
### 1.4 SP2-H0327-N

#### Technical Specifications

Frequency Range	380~2700 MHz
Insertion Loss	≤ 0.5dB
Split Loss	≤ 3.0dB
VSWR	≤1.3
Impedance	50 Ω
Power Handling	300W
PIM3	≤-160dBc@2*20W
Connector	N Female

Operating Temperature	-25~+75 °C
Relative Humidity	5~95 %
Application	Indoor or Outdoor (IP65)
Dimensions	163x61x25 mm
Weight	250g

## Drawing



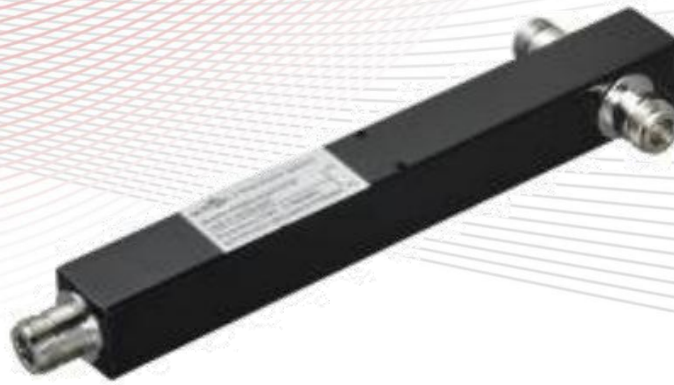
## 1.5 SP2-H0560-N

### Technical Specifications

Frequency Range	555~6000 MHz
Insertion Loss	≤ 0.5dB
Split Loss	≤ 3.0dB
VSWR	≤1.3

Impedance	50 Ω
Power Handling	300W
PIM3	≤-160dBc@2*20W
Connector	N Female
Operating Temperature	-25~+75 °C
Relative Humidity	5~95 %
Application	Indoor or Outdoor (IP65)
Dimensions	107x61x25 mm
Weight	250g

## Drawing



## 1.6 SP2-H0560-4310

### Technical Specifications

Frequency Range	555~6000 MHz
Insertion Loss	≤ 0.5dB



Split Loss	$\leq 3.0\text{dB}$
VSWR	$\leq 1.3$
Impedance	$50\ \Omega$
Power Handling	300W
PIM3	$\leq -160\text{dBc}@2*20\text{W}$
Connector	4.3-10 Female
Operating Temperature	$-25\sim+75\ \text{°C}$
Relative Humidity	5~95 %
Application	Indoor or Outdoor (IP65)
Dimensions	128x66x25 mm
Weight	300g

## Drawing



## 2 3 Way Splitter

### 2.1 SP3-H0738-N

#### Technical Specifications

Frequency Range	698~3800 MHz
Insertion Loss	≤ 0.5dB
Split Loss	≤ 4.8dB
VSWR	≤1.3
Impedance	50 Ω
Power Handling	300W
PIM3	≤-155dBc@2*20W
Connector	N Female
Operating Temperature	-30~+65 °C
Relative Humidity	5~95 %
Application	Indoor or Outdoor (IP65)
Dimensions	219x61x25 mm
Weight	300g

#### Drawing



## 2.2 SP3-H0738-4310

### Technical Specifications

Frequency Range	698~3800 MHz
Insertion Loss	≤ 0.5dB
Split Loss	≤ 4.8dB
VSWR	≤1.3
Impedance	50 Ω
Power Handling	300W
PIM3	≤-160dBc@2*20W
Connector	4.3-10 Female
Operating Temperature	-25~+75°C
Relative Humidity	5~95 %
Application	Indoor or Outdoor (IP65)
Dimensions	162x66x25 mm
Weight	350g

### Drawing



## 2.3 SP3-H0738-D

### Technical Specifications

Frequency Range	698~3800 MHz
Insertion Loss	≤ 0.5dB
Split Loss	≤ 4.8dB
VSWR	≤1.3
Impedance	50 Ω
Power Handling	300W
PIM3	≤-160dBc@2*20W
Connector	DIN Female
Operating Temperature	-25~+75 °C
Relative Humidity	5~95 %
Application	Indoor or Outdoor (IP65)
Dimensions	166x74x25 mm
Weight	370g

### Drawing



## 2.4 SP3-H0327-N

### Technical Specifications

Frequency Range	380~2700 MHz
Insertion Loss	≤ 0.5dB
Split Loss	≤ 4.8dB
VSWR	≤1.3
Impedance	50 Ω
Power Handling	300W
PIM3	≤-160dBc@2*20W
Connector	N Female
Operating Temperature	-25~+75 °C
Relative Humidity	5~95 %
Application	Indoor or Outdoor (IP65)
Dimensions	219x61x25 mm
Weight	400g

### Drawing



## 2.5 SP3-H0560-N

### Technical Specifications

Frequency Range	555~6000 MHz
Insertion Loss	≤ 0.5dB
Split Loss	≤ 4.8dB
VSWR	≤1.3
Impedance	50 Ω
Power Handling	300W
PIM3	≤-160dBc@2*20W
Connector	N Female
Operating Temperature	-25~+75 °C
Relative Humidity	5~95 %
Application	Indoor or Outdoor (IP65)
Dimensions	125x61x25 mm
Weight	300g

### Drawing



## 2.6 SP3-H0560-4310

### Technical Specifications

Frequency Range	555~6000 MHz
Insertion Loss	≤ 0.5dB
Split Loss	≤ 4.8dB
VSWR	≤1.3
Impedance	50 Ω
Power Handling	300W
PIM3	≤-160dBc@2*20W
Connector	4.3-10 Female
Operating Temperature	-25~+75 °C
Relative Humidity	5~95 %
Application	Indoor or Outdoor (IP65)
Dimensions	150x66x25 mm
Weight	350g

### Drawing



## 3 4 Way Splitter

### 3.1 SP4-H0738-N

#### Technical Specifications

Frequency Range	698~3800 MHz
Insertion Loss	≤ 0.5dB
Split Loss	≤6.0dB
VSWR	≤1.3
Impedance	50 Ω
Power Handling	300W
PIM3	≤-155dBc@2*20W
Connector	N Female
Operating Temperature	-30~+65 °C
Relative Humidity	5~95 %
Application	Indoor or Outdoor (IP65)
Dimensions	257x61x43 mm
Weight	420g

#### Drawing





## 3.2 SP4-H0738-4310

### Technical Specifications

Frequency Range	698~3800 MHz
Insertion Loss	≤ 0.5dB
Split Loss	≤6.0dB
VSWR	≤1.3
Impedance	50 Ω
Power Handling	300W
PIM3	≤-160dBc@2*20W
Connector	4.3-10 Female
Operating Temperature	-25~+75 °C
Relative Humidity	5~95 %
Application	Indoor or Outdoor (IP65)
Dimensions	169x66x66 mm
Weight	400g

### Drawing



## 3.3 SP4-H0738-D

### Technical Specifications

Frequency Range	698~3800 MHz
Insertion Loss	≤ 0.5dB
Split Loss	≤6.0dB
VSWR	≤1.3
Impedance	50 Ω
Power Handling	300W
PIM3	≤-160dBc@2*20W
Connector	DIN Female
Operating Temperature	-25~+75 °C
Relative Humidity	5~95 %
Application	Indoor or Outdoor (IP65)
Dimensions	173x74x74 mm
Weight	420g

### Drawing



## 3.4 SP4-H0327-N

### Technical Specifications

Frequency Range	380~2700 MHz
Insertion Loss	≤ 0.5dB
Split Loss	≤6.0dB
VSWR	≤1.3
Impedance	50 Ω
Power Handling	300W
PIM3	≤-160dBc@2*20W
Connector	N Female
Operating Temperature	-25~+75 °C
Relative Humidity	5~95 %
Application	Indoor or Outdoor (IP65)
Dimensions	257x61x61 mm
Weight	420g

### Drawing



## 3.5 SP4-H0560-N

### Technical Specifications

Frequency Range	555~6000 MHz
Insertion Loss	≤ 0.6dB
Split Loss	≤6.0dB
VSWR	≤1.3
Impedance	50 Ω
Power Handling	300W
PIM3	≤-160dBc@2*20W
Connector	N Female
Operating Temperature	-25~+75 °C
Relative Humidity	5~95 %
Application	Indoor or Outdoor(IP65)
Dimensions	126x61x61 mm
Weight	360g

### Drawing



## 3.6 SP4-H0560-4310

### Technical Specifications

Frequency Range	555~6000 MHz
Insertion Loss	≤ 0.6dB
Split Loss	≤6.0dB
VSWR	≤1.3
Impedance	50 Ω
Power Handling	300W
PIM3	≤-160dBc@2*20W
Connector	4.3-10 Female
Operating Temperature	-25~+75 °C
Relative Humidity	5~95 %
Application	Indoor or Outdoor (IP65)
Dimensions	155x66x66 mm
Weight	420g

### Drawing

