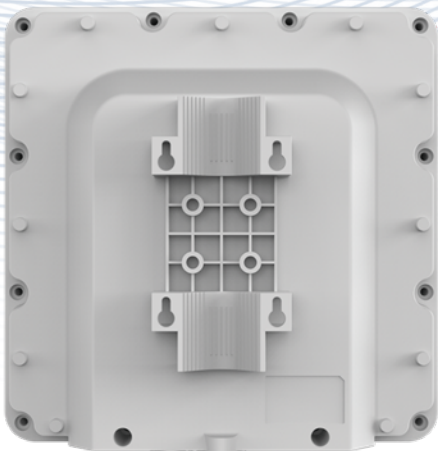


## CP680 CPE DATASHEET



# CP680

## LTE Outdoor CPE

3GPP Release 10/11

CAT6

All LTE Bands

PoE

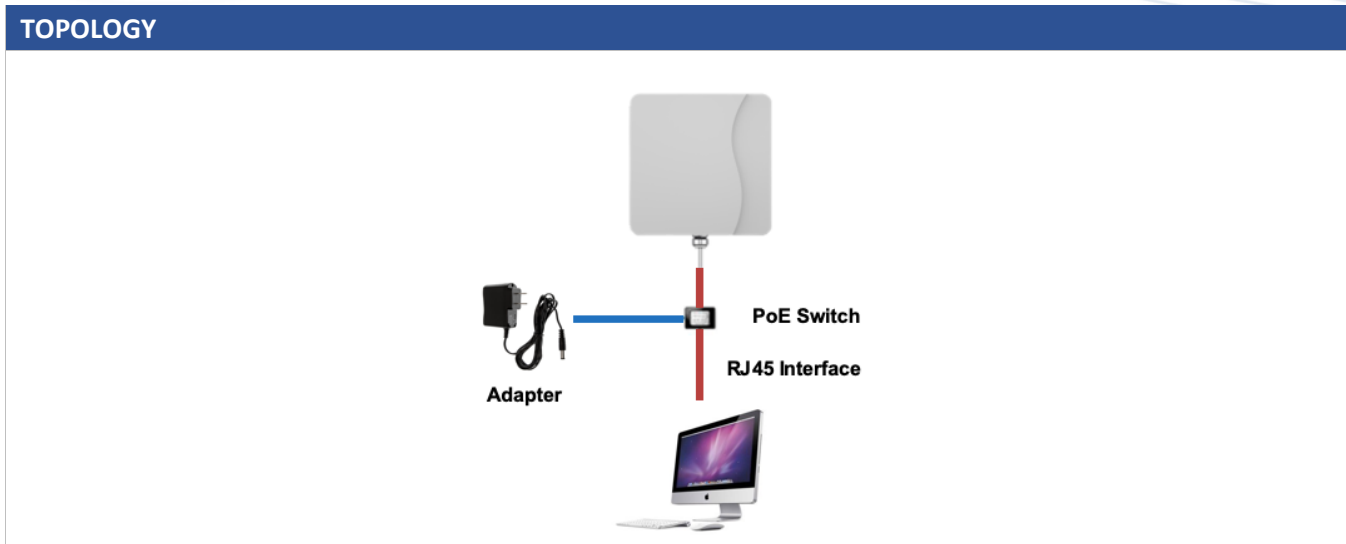
IP67

The CP680 from SUNWAVE is a high-performance outdoor LTE CPE. The product provides a high throughput data transmission network for residential, commercial and enterprise users. Customers enjoy an easy plug & play broadband access solution and large area coverage for various network service scenarios.

# CP680 CPE DATASHEET

CELLULAR SPECIFICATIONS	
<b>LTE Standard</b>	3GPP Release 10/ 11, CAT 6
<b>Peak Throughput</b>	FDD DL 300Mbps; UL 75Mbps
	TDD DL 220Mbps; UL 15Mbps (Config 2:7)
<b>LTE Bands*</b>	Option 1                      B1/3/7/8/(17)/20/(28)/38/(40)/41/42/43/48
	Option 2 (Prototype)      B2/4/5/8/12/14/17/25/26/38/41/42/43/48/66
	Option 3                      B42/43/48
	Option 4                      B7/38/41
<b>Carrier Aggregation (CA) and MIMO</b>	CA: DL Intra/Inter 2CA
	MIMO: DL 2 x 2 MIMO/ 4 X 4 MIMO
<b>Tx / Rx</b>	1Tx / 4Rx
<b>Transmit Power</b>	Power Class 3 (23 ± 2dBm)
<b>LTE Antenna</b>	4 directional antennas
<b>LTE Antenna Gain</b>	Option 1 700 MHz ~ 1 GHz: 6 dBi 1.7 GHz ~ 2.1 GHz: 7 dBi 2.3 GHz ~ 2.7 GHz: 9 dBi 3.4 GHz ~ 3.8 GHz: 8 dBi
	Option 2 700 MHz ~ 1 GHz: 6 dBi 1.7 GHz ~ 2.1 GHz: 7 dBi 2.3 GHz ~ 2.7 GHz: 9 dBi 3.4 GHz ~ 3.8 GHz: 8 dBi
	Option 3 3.4 GHz ~ 3.8 GHz: 15 dBi
	Option 4 2.5 GHz ~ 2.7 GHz: 13 dBi

\*The frequency bands in () are not included in the conventional sample.



## CP680 CPE DATASHEET

HARDWARE SPECIFICATIONS	
<b>Fixed Interfaces</b>	1 x RJ45 10/ 100/ 1000Mb/s
	1 x SIM slot (1.8V/ 3.0V 2FF)
<b>LED Indicator</b>	4 LED indicators (PWR, NET, SIM, RF signal)
<b>Reset</b>	Pin Hole
<b>Power Supply</b>	24V non-standard POE default
	IEEE 802.3at compatible POE customized
<b>Power Consumption</b>	< 8W
<b>Power Adapter</b>	Input: AC 90 ~ 240V
	Output: DC 24V/ 0.5A
<b>Water and Dustproof</b>	IP67
<b>Dimensions and Mounting</b>	Dimensions: 288 x 288 x 82 mm   11.3 x 11.3 x 3.2 in
	Weight: < 2 kg   4 lbs
	Mounting: rail and wall mounting
<b>Temperature and Humidity</b>	Operating: -40 °C ~ +55 °C   -40 °F ~ +131 °F
	Storage: -40 °C ~ +85 °C   -40 °F ~ +185 °F
	Humidity: 5% ~ 95%

SOFTWARE SPECIFICATIONS	
<b>Operation Mode</b>	NAT mode
	Route Mode
	Bridge Mode
<b>Device Management</b>	TR069
	SNMP
	Web UI
	Software upgrade- FOTA
	USIM PIN management
<b>Network Protocols and Features</b>	Multi-APN
	NAT/NATP
	SNTP/NITZ
	Static Routing
	Virtual server and DMZ
	DNS relay and DDNS
	IGMP snooping and IGMP proxy
	DHCP server
	IPV4/IPv6 Dual Stack
	UPnP
Parents control	

## CP680 CPE DATASHEET

VPN	IPsec
	PPTP
	GRE (L2/L3)
	L2TP v2/v3
	GRE over IPsec
	L2TP over IPsec
Security and Firewall	MAC address filtering
	IP address filtering
	URL filtering
	DDOS

Contact Us Today

[en.sunwave.com](http://en.sunwave.com)